

## Major Domestic Appliance – Cooking

tesa<sup>®</sup> Solutions for the Cooking Industry

APPLICATION FOLDER



## Making Product Processes More Efficient – tesa® Tape Solutions



tesa SE is one of the leading manufacturers of PSA adhesive tapes and system solutions. Our tape experts located in over 50 countries supporting customers to find a perfect solution. International companies in automotive, appliance and electronic industries work with tesa SE as partner on all continents.

For more than 100 years tesa SE designs and produces PSA adhesive tapes. The current range of over 700 different qualities offers solutions for all kinds of applications such as packaging, masking, protection and every kind of bonding. In most cases the ideas for new tape qualities are created together with our partners in the industries.

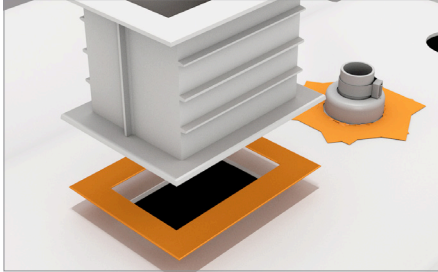
Adhesive tape designs that make production processes more efficient and improve the quality of the finished goods are the base for tesa's success. An example from the early 80ties is the blue TPP tape for transport securing of shelves, bins and cables in- and outside of appliances – which still has its place in nearly every device.

Today tesa designs new tape qualities for various customer needs in R&D centers and production sites located in Europe, America and Asia. The combination of contact on local but overview and knowledge on international level results in state of the art adhesive tape solution for the industry.

### Advantages for tesa customers:

- Knowledge of customer's processes
- Complete assortment for all tape applications
- New adhesives and innovative technologies
- Customized systems for tape application
- Own affiliates in over 50 countries
- tesa tape and process experts close to all major production centers





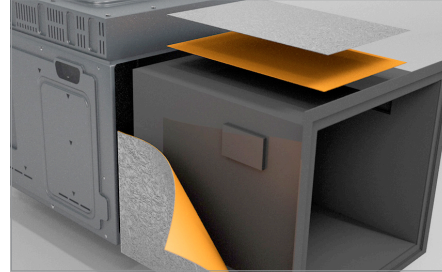
**Characteristics:**

- Good adhesion
- Conformable backing to stick on irregular surface
- Available as die-cut

**tesa® double sided tapes, best tesa® 62510**

**1. Fixing of small Parts**

Many small parts made of plastic or metal have to be mounted to the housing. If already equipped with a double sided tape, the handling and positioning becomes easier.



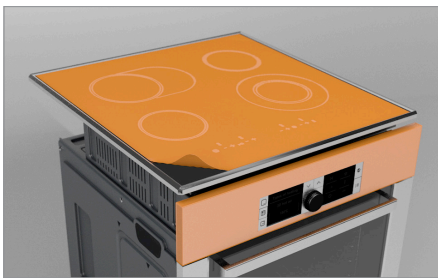
**Characteristics:**

- High tack
- Temperature resistance
- Available as die-cut

**tesa® speciality tapes, best tesa® 50575**

**4. Alu shielding**

Aluminum shields against heat. Either thicker panels are applied with a double sided tape or a pure alu-adhesive tape is used.



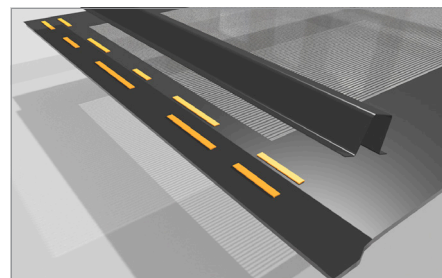
**Characteristics:**

- Sufficient bonding
- Residue free removal
- Aging resistance

**tesa® speciality tapes, best tesa® 4848**

**2. Surface protection**

Protects the critical glass, plastic or painted metal parts to avoid scratches, dirt or other defects during assembly, transport or installation process.



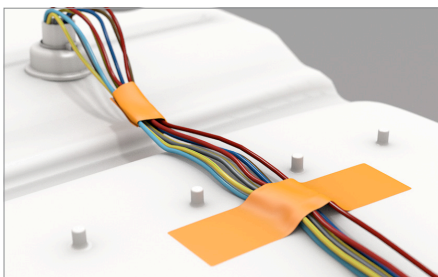
**Characteristics:**

- Visco-elastic acrylic core
- High adhesion value to glass and alu
- Dampening properties
- Deep black for best design

**tesa® double sided tapes, best tesa® 7074**

**5. Constructive bonding on the door inside**

Fixing a metal construction with screws is an insufficient concept. By using double sided tape no additional screws and no curing time are necessary. Instead the production process becomes faster and more flexible.



**Characteristics:**

- Tacky adhesive for initial contact
- Sufficient adhesion to all substrates

**tesa® speciality tapes, best tesa® 4323**

**3. Cable Harnessing and Fixation**

If cables are bundled, fixing them is easier and more secure. Fixing the cables keeps them in position and avoids contact to hot areas.



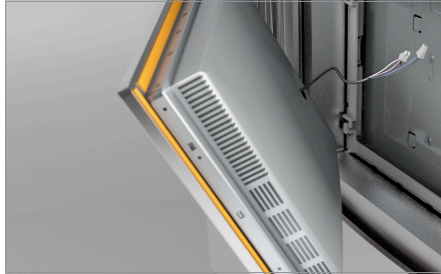
**Characteristics:**

- High adhesion to plastics
- Good die-cuttability
- Flexible backing

**tesa® double sided tapes, best tesa® 68644**

**6. Mounting of displays**

Applying displays already equipped with a double sided tape is efficient and clean.



- Characteristics:**
- High adhesion to metal and plastic
  - High shear strength
  - Temperature resistance 70°C, longterm
  - Thick product design for noise dampening

**tesa® double sided tapes, best tesa® 62510**

### 7. Mounting of panels

The double sided tape fixes the front panel, making sure no rattling and no dust is coming through, pre-assembling raises efficiency.



- Characteristics:**
- High bonding strength to keep the panel in place
  - Foam based design avoiding rattling and for dampening
  - Temperature resistance to withstand all climate conditions

**tesa® double sided tapes, best tesa® 7065**

### 8. Mounting of design panels

Fixing decorative, branded plastic panels to the outside of a basic metal housing.



- Characteristics:**
- Easy to die-cut
  - High adhesion to plastic
  - Aging resistance

**tesa® double sided tapes, best tesa® 68644 / 62508**

### 9. Mounting of emblems

With double sided tapes emblems mounting can be done without punching the metal or plastic substrates, ideal when pre-assembled.



- Characteristics:**
- Special adhesive for residue free removal
  - High tensile strength to stop rattling
  - No risk of tearing

**tesa® strapping tapes, best tesa® 64284**

### 10. Transport Securing of racks and manuals

Fixation with a tape avoids loose racks and sparepart boxes during transport and no rattling occurs.



- Characteristics:**
- Residue free removal
  - No effects to surfaces
  - Very strong and stress resistant backing
  - Removal even at lower temperatures

**tesa® strapping tapes, best tesa® 64294**

### 11. Transport Securing of cooktop

Keeps the metal cooktop in place and avoids movement, so possible scratches will not occur. Tape can fix other film or board additionally.



- Characteristics:**
- Natural rubber adhesives stick perfectly on card board
  - Easy unwinding
  - Good performance at lower temperatures

**tesa® speciality tapes, best tesa® 4120, 4124**

### 12. Transport Packaging

Ranges are heavy goods and therefore need higher quality of board material as well as tape. The range for carton sealing tapes is based on backings like PP, PVC (printable).



### The tesa Group – Worldwide

With offices in over 50 countries, 7 production / converting facilities, and more than 3700 employees around the world, tesa is one of the world's largest manufacturers of pressure-sensitive adhesive tape.

- Production
- Sales Office

tesa® products prove their impressive quality day in, day out in demanding conditions and are regularly subjected to strict controls. All information and recommendations are provided to the best of our knowledge on the basis of our practical experience. Nevertheless tesa SE can make no warranties, expressed or implied, including, but not limited to any implied warranty of merchantability or fitness for a particular purpose. Therefore, the user is responsible for determining whether the tesa® product is fit for a particular purpose and suitable for the user's method of application. If you are in any doubt, our technical support staff will be glad to advise you.



The tesa Management System complies with the industry's most important certification standards

Distribuidor **tesa**  
 +34 93 115 7029  
 Info@DistribuidorCintasTESA.es